

# MITRAK.

## WHERE PERFORMANCE FINDS ITS TRACK.



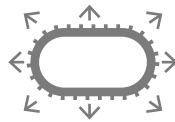
# AGRICULTURAL RUBBER TRACKS FOR EFFICIENT, DURABLE FIELD WORK

MITRAK is a high-performance solution for agricultural machinery, engineered to deliver long life, durability, and efficiency in the field. Oversized, brass-coated steel cables provide excellent strength and corrosion resistance, extending track service life. Special wear resistant tread compounds protect the internal structure, ensuring reliable performance over time. At the same time, low ground pressure and optimized flotation reduce soil compaction, improve traction, and increase productivity, allowing you to cover more ground efficiently.

## Key benefits



DURABILITY



EXCEPTIONAL  
STRENGTH



INCREASED  
PRODUCTIVITY



# ENGINEERING STRENGTH INTO EVERY TRACK

## High-resistance tread compound

The tread is made from a specially formulated rubber that resists wear and cuts, ensuring a long-lasting track life even under demanding conditions.

## Reinforced track body

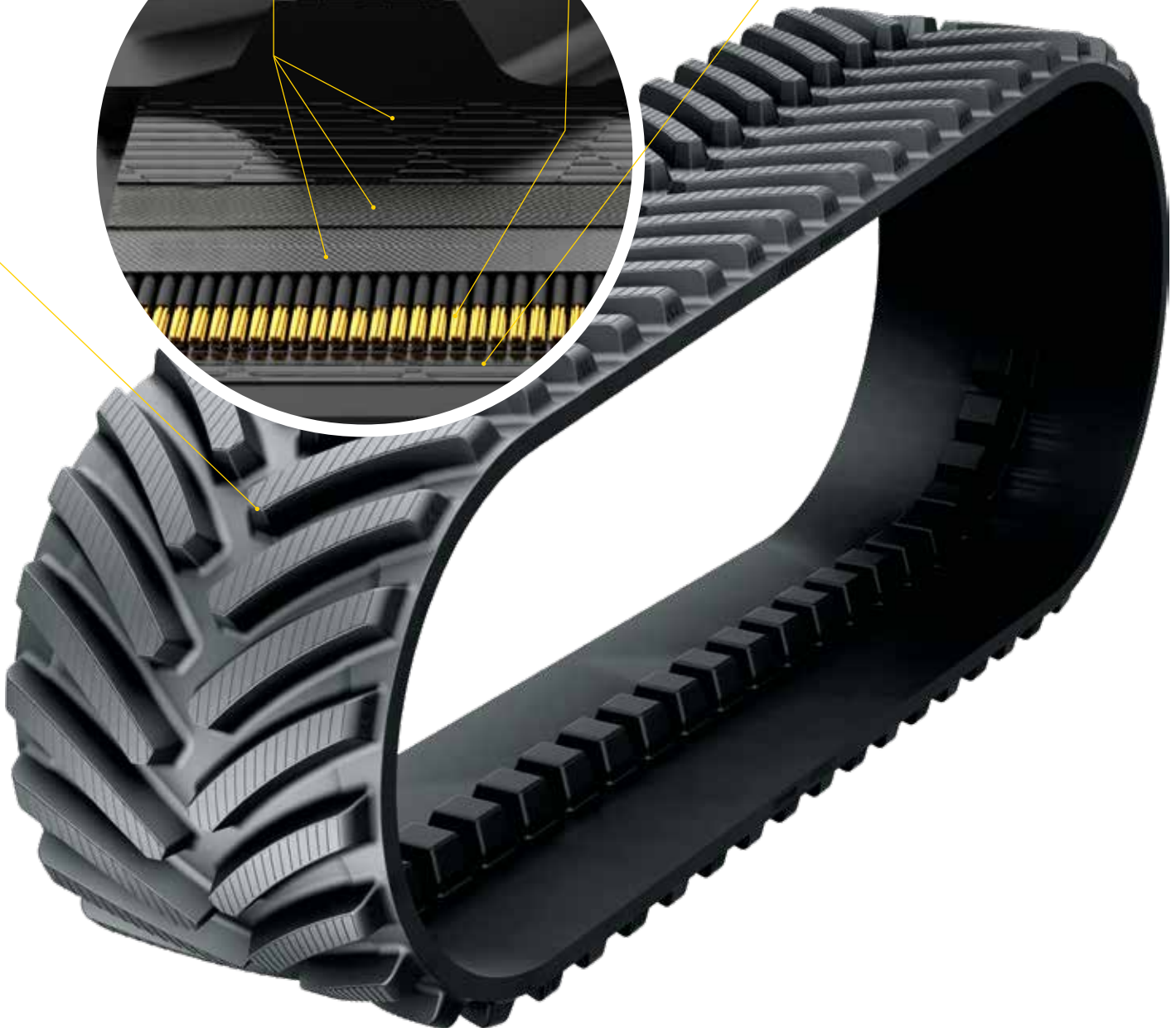
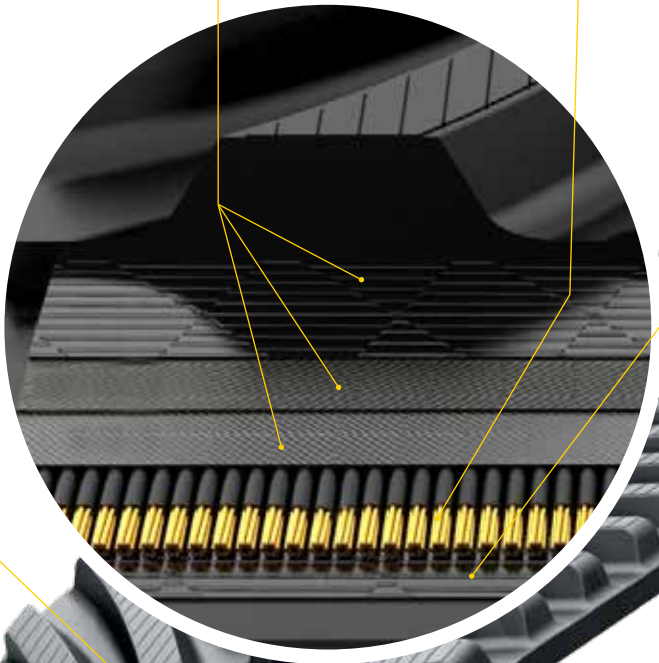
Three layers of auxiliary wires, positioned at varying angles above the steel cables, enhance track stability and maintain consistent performance across the entire track.

## High-strength steel cables

Brass coated galvanized steel cable provides, provide uniform strength along the track, supporting heavy loads and extending service life.

## Protective wire layer

An additional layer of wire safeguards the steel cables from abrasion caused by the drive wheels, preserving track integrity and reliability over time.



# SIZE RANGE

## MITRAK - Friction Drive SD

Machine		Size	Width (mm)	Tread				Carcass		Guide Lug	
Brand	Model			Qty	Height (mm)	Tip width (mm)	Pitch (in)	Main cable size (mm)	Thickness (mm)	Quantity	Length (mm)
CAT	35/45/55	18"x53x6"	18" (457)	106	65.02	48	6	5,4	37	53	112
		25"x53x6"	25" (635)								
		30"x53x6"	30" (762)								
CAT	65/75/85/95	25"x57x6"	25" (635)	114	65.02	48	6	5,4	37	57	112
		30"x57x6"	30" (762)								
		18"x58x6"	18" (457)								
AGCO	Challenger MT700 (series)	25"x58x6"	25" (635)	116	65.02	48	6	5,4	37	58	112
		30"x58x6"	30" (762)								
		25"x66x6"	25" (635)								
AGCO	Challenger MT800 (series) Fendt Vario 1100 (series)	30"x66x6"	30" (762)	132	65.02	48	6	5,4	37	66	112
		36"x66x6"	36" (915)								
		18"x60x6"	18" (457)								
AGCO	FENDT Vario 900MT (MT738/740/743)	25"x60x6"	25" (635)	120	65.02	48	6	5,4	37	60	120
		30"x60x6"	30" (762)								
		18"x54x6"	18" (457)								
John Deere	8000T	25"x54x6"	25" (635)	108	65.02	48	6	5,4	37	54	112
		30"x54x6"	30" (762)								
		18"x59x6"	18" (457)								
John Deere	8RT	25"x59x6"	25" (635)	118	65.02	48	6	5,4	37	59	112
		30"x59x6"	30" (762)								
		30"x63x6"	30" (762)								
John Deere	9000T	36"x63x6"	36" (914)	126	65.02	48	6	5,4	37	63	112
		30"x65x6"	30" (762)								
		36"x65x6"	36" (914)								
John Deere	9 RT	25"x44x6"	25" (635)	130	65.02	48	6	5,4	37	65	112
		29"x44x6"	29" (735)								
		30"x44x6"	30" (762)								
CLAAS	Terra Trac Lexion	35"x44x6"	35" (890)	88	65.02	48	6	5,4	37	44	88
		36"x44x6"	36" (914)					6,4			

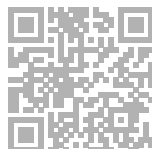
Subject to technical amendments, printing errors and mistakes in text or illustrations. 05.26

## MITRAK - Friction Drive HD

Machine		Size	Width (mm)	Tread				Carcass		Guide Lug	
Brand	Model			Qty	Height (mm)	Tip width (mm)	Pitch (in)	Main cable size (mm)	Thickness (mm)	Quantity	Length (mm)
CAT	35/45/55	25"x41x7.78"	25" (635)	82	70.1	50.8	7.78	5,4	41	41	136
		30"x41x7.78"	30" (762)								
CAT	65/75/85/95	25"x44x7.78"	25" (635)	88	70.1	50.8	7.78	5,4	41	44	136
		30"x44x7.78"	30" (762)								
		36"x44x7.78"	36" (914)								
AGCO	Challenger MT700 (series)	25"x45x7.78"	25" (635)	90	70.1	50.8	7.78	5,4	41	45	136
		30"x45x7.78"	30" (762)								
AGCO	Challenger MT800 (series) Fendt Vario 1100 (series)	30"x51x7.78"	30" (762)	102	70.1	50.8	7.78	5,4	41	51	136
		36"x51x7.78"	36" (914)								
AGCO	FENDT Vario 900MT (MT738/740/743)	30"x46x7.78"	30" (762)	92	70.1	50.8	7.78	5,4	41	46	136
John Deere	8000T	25"x42x7.78"	25" (635)	84	70.1	50.8	7.78	5,4	41	42	136
		30"x42x7.78"	30" (762)								
John Deere	8RT	25"x46x7.78"	25" (635)	92	70.1	50.8	7.78	5,4	41	46	136
		30"x46x7.78"	30" (762)								
		30"x49x7.78"	30" (762)								
John Deere	9000T	36"x49x7.78"	36" (914)	98	70.1	50.8	7.78	5,4	41	49	136
		30"x50x7.78"	30" (762)								
John Deere	9 RT	36"x50x7.78"	36" (914)	100	70.1	50.8	7.78	5,4	41	50	136

# Mitas

WEBSITE



FOLLOW US



e-SHOP

