

# MITRAK.

## WHERE PERFORMANCE FINDS ITS TRACK.



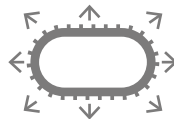
# AGRICULTURAL RUBBER TRACKS FOR EFFICIENT, DURABLE FIELD WORK

MITRAK is a high-performance solution for agricultural machinery, engineered to deliver long life, durability, and efficiency in the field. Oversized, brass-coated steel cables provide excellent strength and corrosion resistance, extending track service life. Special wear resistant tread compounds protect the internal structure, ensuring reliable performance over time. At the same time, low ground pressure and optimized flotation reduce soil compaction, improve traction, and increase productivity, allowing you to cover more ground while protecting the soil.

## Key benefits



DURABILITY



EXCEPTIONAL  
STRENGTH



INCREASED  
PRODUCTIVITY



# ENGINEERING STRENGTH INTO EVERY TRACK

## High-resistance tread compound

The tread is made from a specially formulated rubber that resists wear and cuts, ensuring a long-lasting track life even under demanding conditions.

## Reinforced track body

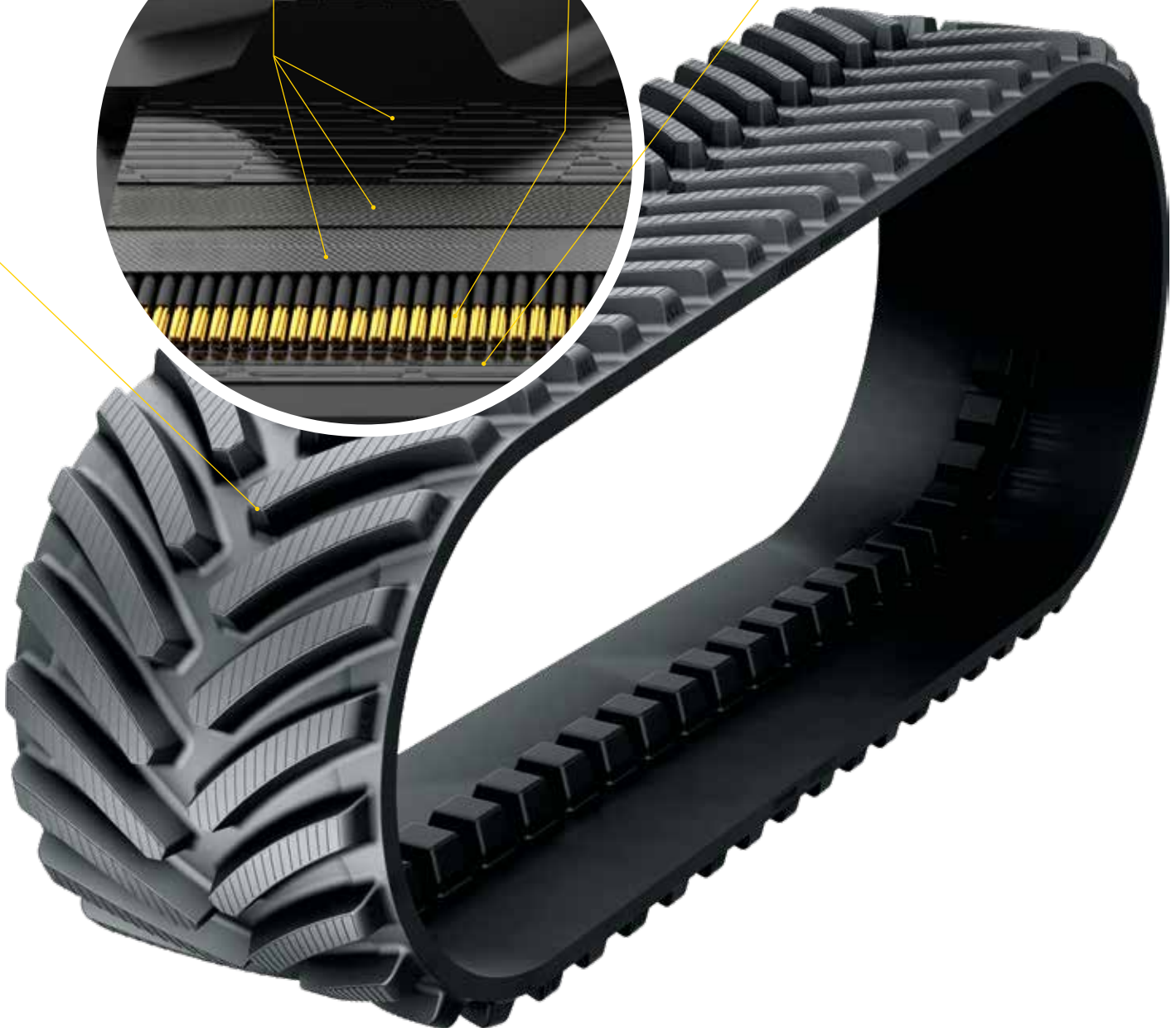
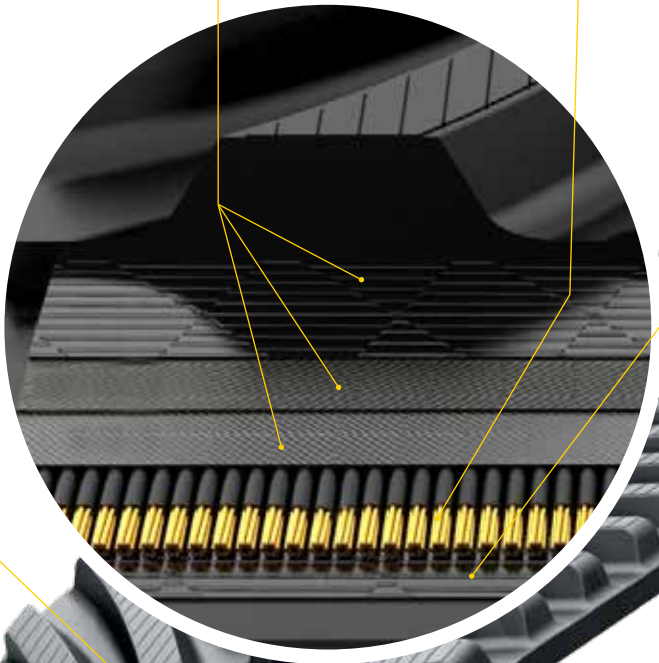
Three layers of auxiliary wires, positioned at varying angles above the steel cables, enhance track stability and maintain consistent performance across the entire track.

## High-strength steel cables

Brass coated galvanized steel cable provides, provide uniform strength along the track, supporting heavy loads and extending service life.

## Protective wire layer

An additional layer of wire safeguards the steel cables from abrasion caused by the drive wheels, preserving track integrity and reliability over time.



# SIZE RANGE

## MITRAK - Friction Drive SD

Machine		Size	Tread				Carcass		Guide Lug		Driving type	Weight (Kg)
Brand	Model		Qty	Height (in)	Tip width (in)	Pitch (in)	Main cable size (mm)	Thickness (mm)	Quantity	Length (mm)		
Challenger	35/45/55	18x53x6	106	2.56	1.89	6	5.4	37	53	112	Friction	383
		25x53x6										522
		30x53x6										624
Challenger	65/75/85/95	25x57x6	114	2.56	1.89	6	5.4	37	57	112	Friction	556
		30x57x6										663
AGCO	MT700 (A to E Series)	18x58x6	116	2.56	1.89	6	5.4	37	58	112	Friction	419
		25x58x6										571
		30x58x6										682
AGCO	MT800 (A to E Series)	25x65x6	132	2.56	1.89	6	5.4	37	66	112	Friction	649
		30x65x6										776
		36x65x6										918
John Deere	8000 T	18x54x6	108	2.56	1.89	6	5.4	37	54	112	Friction	398
		25x54x6										539
		30x54x6										644
John Deere	8RT	18x59x6	118	2.56	1.89	6	5.4	37	59	112	Friction	426
		25x59x6										581
		30x59x6										694
John Deere	9000 T	30x63x6	126	2.56	1.89	6	5.4	37	63	112	Friction	773
		36x63x6										912
		30x65x6										797
John Deere	9 RT	36x65x6	130	2.56	1.89	6	5.4	37	65	112	Friction	941
		18x60x6										433
		25x60x6										591
AGCO	AGCO MT700 (MT 738/740/743) FENDT VARIO MT900	30x60x6	120	2.56	1.89	6	5.4	37	60	120	Friction	706
		25x44x6										415
		29x44x6										508
CLAAS	Terra Trac	30x44x6	88	2.56	1.89	6	5.4	37	44	88	Friction	500
		35x44x6					576					
		36x44x6					629					
		6.4										

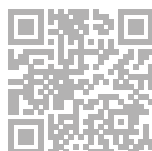
Subject to technical amendments, printing errors and mistakes in text or illustrations. 0326

## MITRAK - Friction Drive HD

Machine		Size	Tread				Carcass		Guide Lug		Driving type	Weight (Kg)
Brand	Model		Qty	Height (in)	Tip width (in)	Pitch (in)	Main cable size (mm)	Thickness (mm)	Quantity	Length (mm)		
Challenger	35/45/55	25x82x7.78	88	2.76	2	7.8	5.4	41	41	66	Friction	548
		30x82x7.78										655
Challenger	65/75/85/95	25x88x7.78	88	2.76	2	7.8	5.4	41	44	66	Friction	584
		30x88x7.78										696
		36x88x7.78										833
AGCO	MT700 (A to E Series)	25x90x7.78	90	2.76	2	7.8	5.4	41	45	66	Friction	600
		30x90x7.78										717
AGCO	MT800 (A to E Series)	30x102x7.78	102	2.76	2	7.8	5.4	41	51	66	Friction	822
		36x102x7.78										964
John Deere	8000 T	25x84x7.78	84	2.76	2	7.8	5.4	41	42	66	Friction	566
		30x84x7.78										676
John Deere	8RT	25x92x7.78	92	2.76	2	7.8	5.4	41	46	66	Friction	610
		30x92x7.78										729
		30x96x7.78										811
John Deere	9000 T	36x96x7.78	96	2.76	2	7.8	5.4	41	49	66	Friction	958
		30x100x7.78										837
John Deere	9 RT	36x100x7.78	100	2.76	2	7.8	5.4	41	50	66	Friction	988
		36x100x7.78										



WEBSITE



FOLLOW US



e-SHOP

